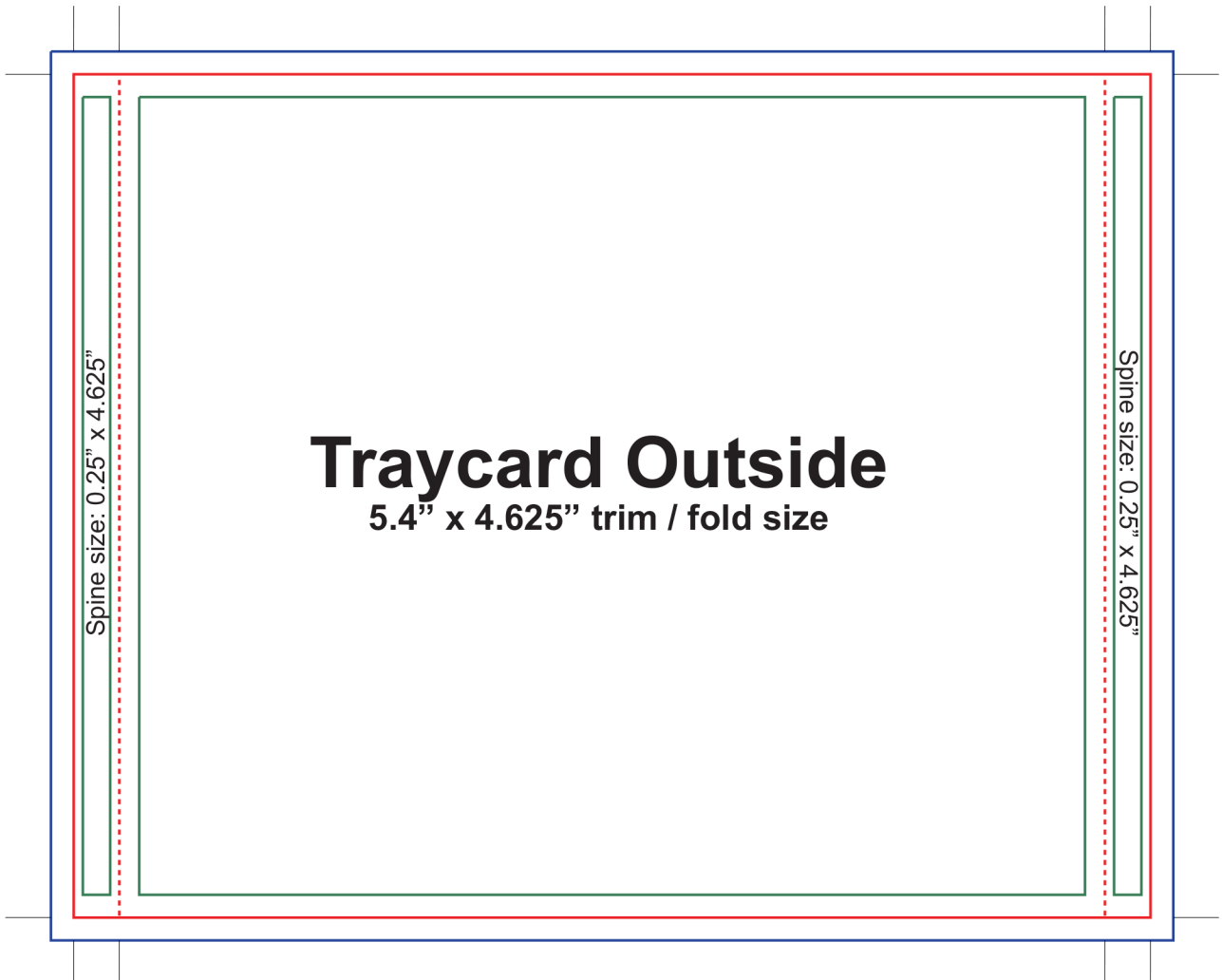


## Prior to sending in artwork files do the following:

- Step 1: Convert to CMYK (If in RGB color mode)
- Step 2: Rasterize text layers - Eliminates font problems
- Step 3: Turn off content guide layers - Leave crop marks intact
- Step 4: Save copy of final 300dpi artwork file - Preferred file format: .TIFF, PDF, JPEG
- Step 5: Send us the final file - Or, call for FTP instructions



Red indicates trim line, dotted line indicates fold

Blue indicates full-bleed line

Green indicates edge of print area (no print beyond green guides)